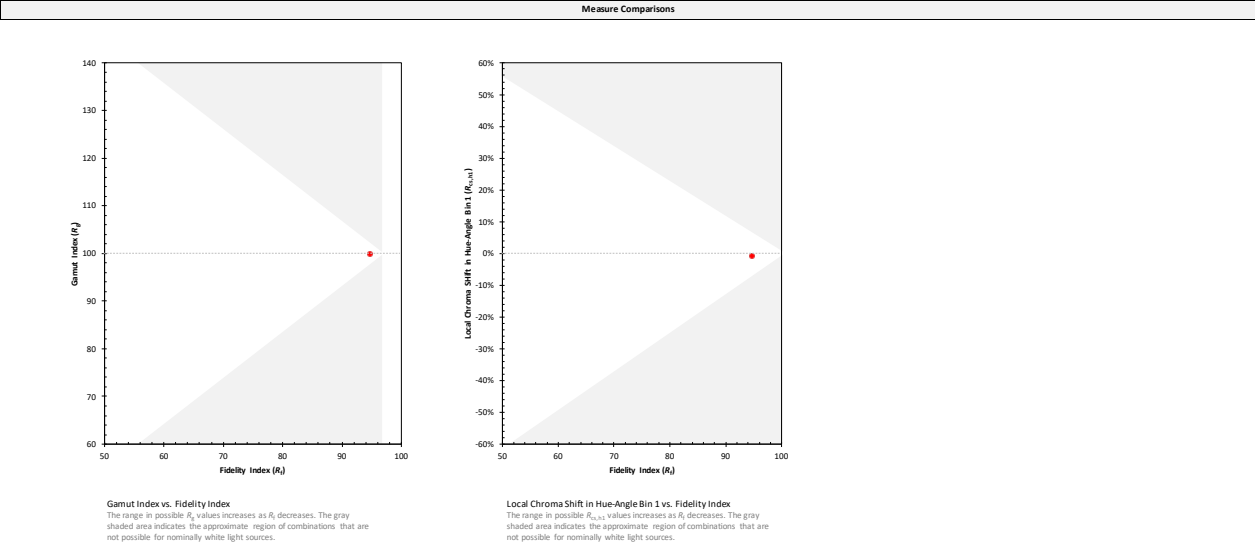
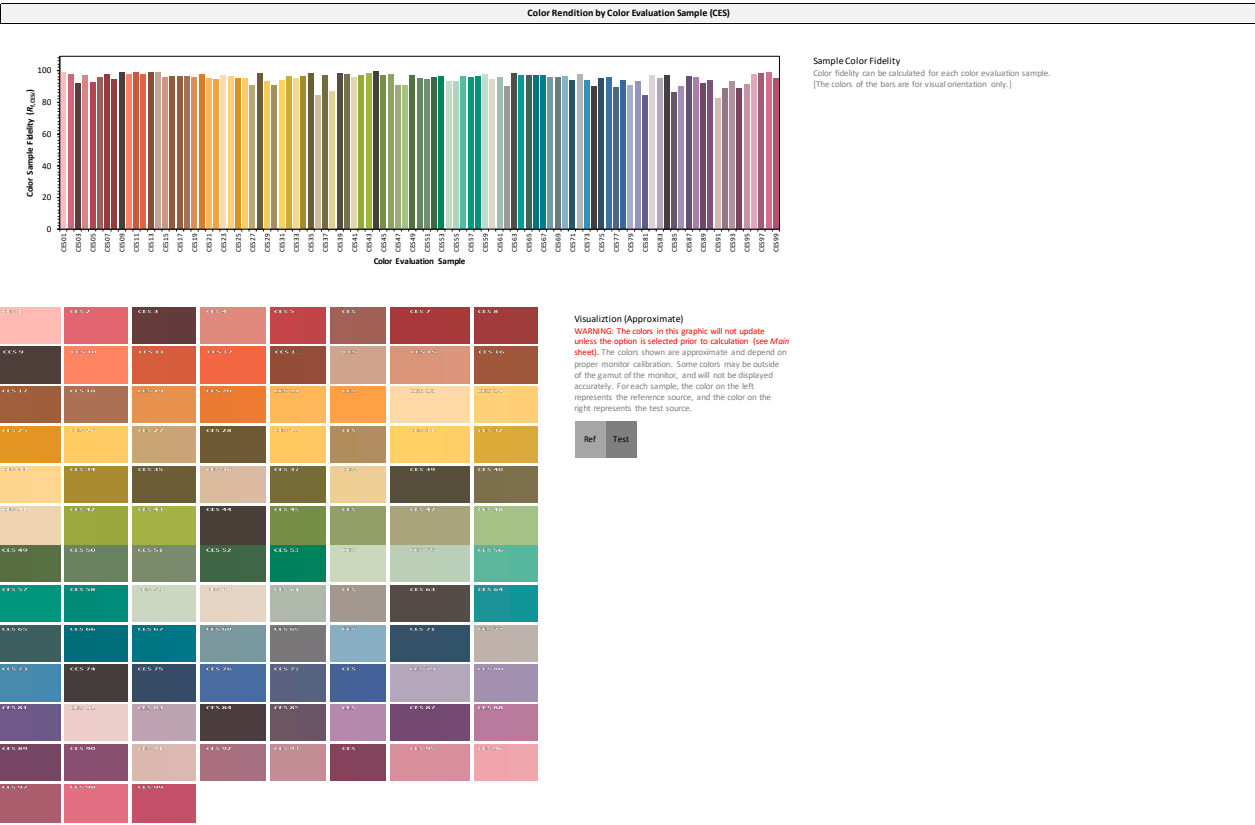
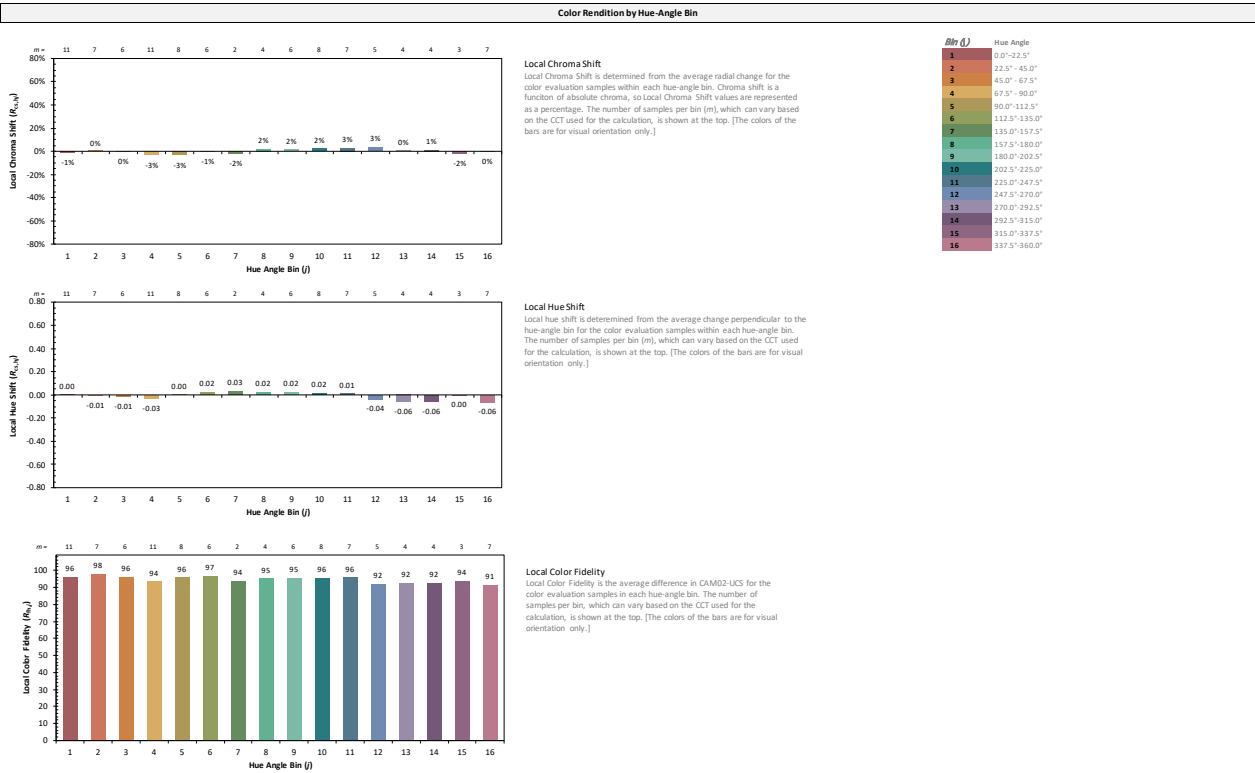
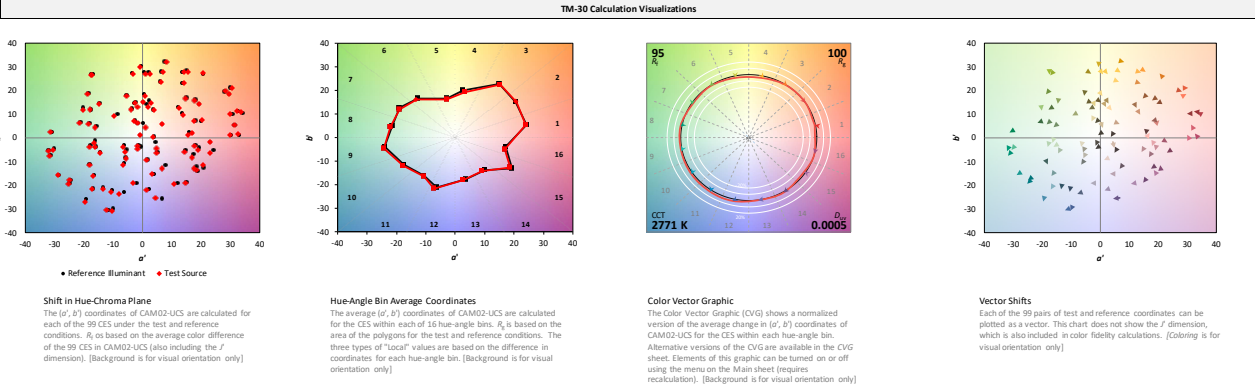
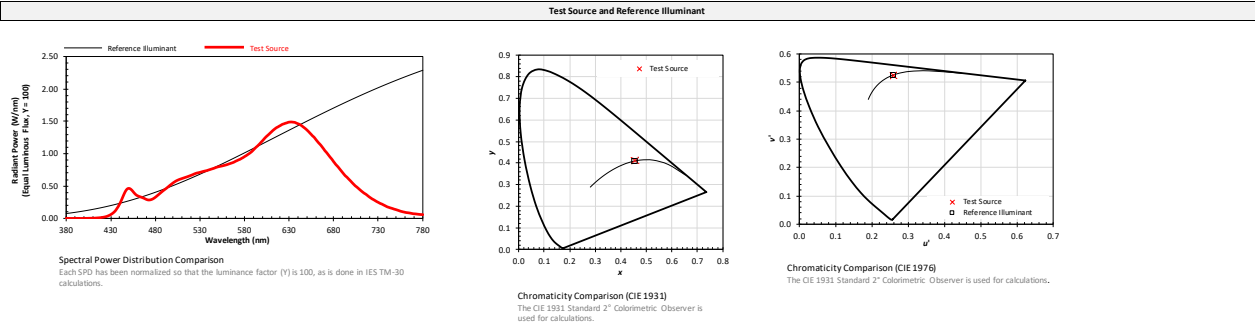
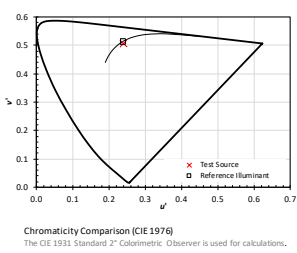
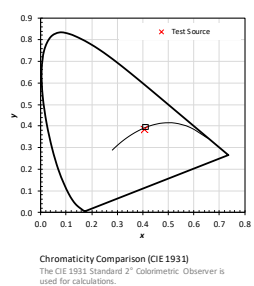
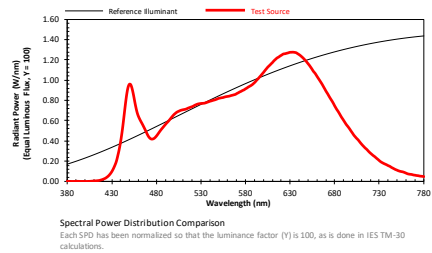


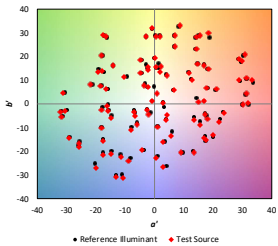
This sheet displays several graphical results related to the ANSI/IES TM-30-18 calculations initiated on the Calculator sheet. For detailed numerical results, see the Results Numerical sheet. For printable reports, see the Simple Report, Intermediate Report or Full Report sheets.



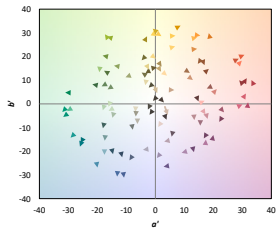
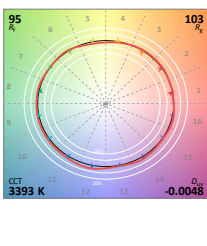
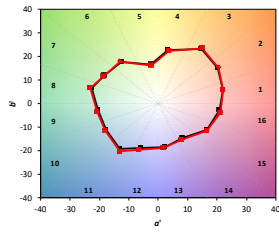
Test Source and Reference Illuminant



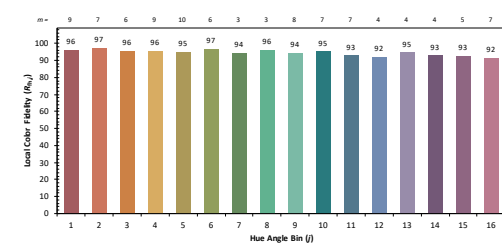
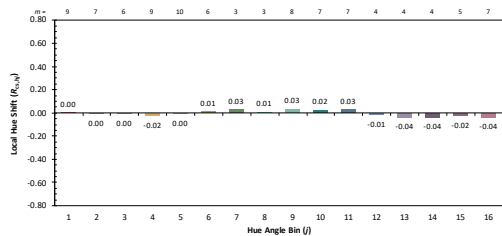
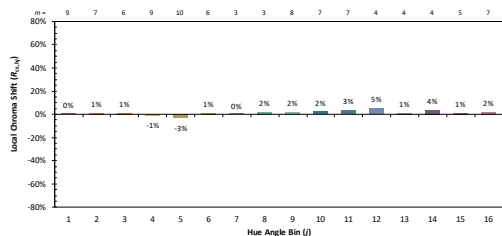
TM-30 Calculation Visualizations



**Shift in Hue-Chroma Plane**  
The  $(u', v')$  coordinates of CAM02-UCS are calculated for each of the 99 CES under the test and reference conditions.  $R_t$  is based on the average color difference of the 99 CES in CAM02-UCS (also including the  $J$  dimension). [Background is for visual orientation only]

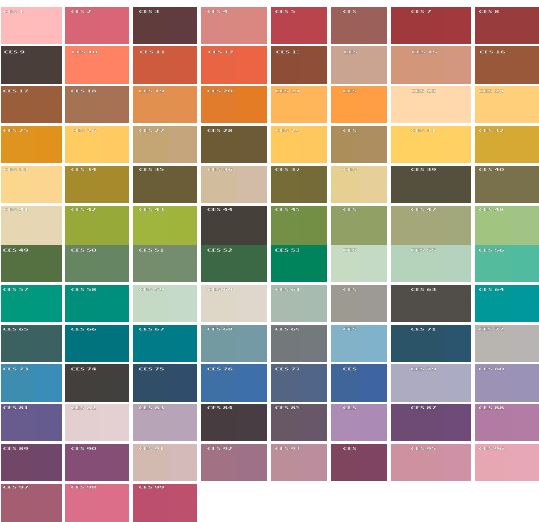
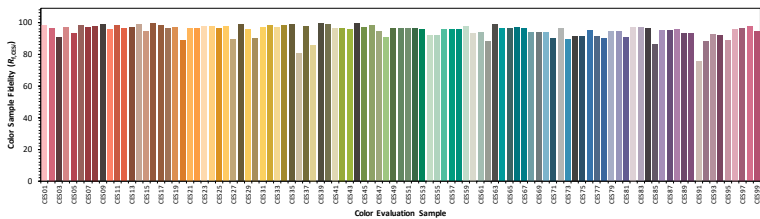


Color Rendition by Hue-Angle Bin



Bin ( $j$ )	Hue Angle
1	0.0°-22.5°
2	22.5°-45.0°
3	45.0°-67.5°
4	67.5°-90.0°
5	90.0°-112.5°
6	112.5°-135.0°
7	135.0°-157.5°
8	157.5°-180.0°
9	180.0°-202.5°
10	202.5°-225.0°
11	225.0°-247.5°
12	247.5°-270.0°
13	270.0°-292.5°
14	292.5°-315.0°
15	315.0°-337.5°
16	337.5°-360.0°

Color Rendition by Color Evaluation Sample (CES)



Measure Comparisons

